

Paradise Club

Technical Package.

About

Bringing wild, high-energy glamour to the Times Square. A partnership between Studio 54's Ian Schrager and Michelin-starred chef John Fraser. Signature parties weekly.

01 Space Overview

02 Audio

05 Stage Information

07 Lighting

08 Video

09 Broadcast

10 Power Distribution

11 Venue Floorplan

12 Press

Space Overview



The Paradise Club (Cabaret-7th floor) is part of a 50,000 SF Entertainment, Food and Beverage facility vertically integrated with a 40 story-452 key Edition Luxury hotel above, and an 18,000 SF HD LED sign below.

The F&B experience on the 7th floor can be seamlessly combined with the other venues (Terraces, Bars, Event Spaces, Restaurants, and Penthouse) to create a destination entertainment experience for artist and audience alike.

The Paradise Club and its dedicated pre-function, green rooms, bathroom, and terrace comprise approximately 15,000 SF. The 7th floor as a whole has an event capacity in excess of 700 people.

It can present an elegant 130 seat sit down dinner, to a 500 person nightclub event. It has been designed by the world's leading aesthetic, production and technical professionals to create a beautiful, sexy environment that is state of the art technologically. The Paradise club enables the experience to be both intimate, and high touch for the artist/audience, yet global in its reach.



Entry Hallway



Studio / Greenroom

Audio

The audio system at the ETS Cabaret was designed for high performance and flexibility of usage scenarios. These scenarios include:

Cabaret/Theater shows	Live band performances
DJ/Nightclub	Corporate Events
Audio for Movies and Video	Background Music with flexibility

The main PA is a state-of-the-art customized Clair Brothers system powered by 57,000-Watt Lab Gruppen amplification stack. The system is capable of the following operating modes:

- *Distributed BGM

*Discrete 9-channel Theater mode

*7.1 Surround Sound, Audio for Video
- *LCRS + FF + Delay

*Stereo + Subs + Delay

The various room setups are coordinated with Theatrical Lighting and Video systems and are recallable through fixed and portable Crestron touch panels. Multiple production locations are possible, and they include rear center floor booth, center floor, green room, stage side. Wiring and power supply for

two channels of analog intercom are provided. Users need to provide own beltpacks and headsets. Cabaret audio can be distributed to the 7th floor overflow rooms, prefunction space, outdoor terrace, as well as the public areas of the hotel on floors 9 through 12.

Audio Main System Components

System processing:

QSC Q-Sys Core 510f with Dante Cards

Lake Controller DSP in Lab Gruppen amplifiers

FOH Equipment

1x Yamaha CL-3 digital mixer o 1x Yamaha RIO-3224

1x Yamaha RIO-1608

Main PA

4x Clair Brothers CAT-215 main speakers (2 per side)

4x Clair Brothers USLP-218 subwoofers

4x Clair Brothers 12Sx subwoofers

9x Clair Brothers 1AM (Center and Surround/Delay speakers) o 2x Tannoy VLS-15 (Terrace)

2x Tannoy AMS-8DC (Terrace)

2x Danley TH-Mini (Terrace)

Amplification

1x Lab Gruppen D10:4L

4x Lab Gruppen D20:4L o 3x Lab Gruppen D40:4L o 3x Lab Gruppen D120:4L

Back Line

3x Clair Brothers 1AM+ Active Stage Monitor

1x Clair Brothers kiT-Sub+ Active Subwoofer

2x Lab Gruppen D40:4L (4x 1000W DSP amplifier for portable stage wedges).

Analog Inputs and Outputs on stage wall panels. Additional inputs over Dante.

Stage Backline

DJ Gear in custom portable booth

3x CDJ 2000 NXS2

2x Pioneer XDJ-1000 MK2

1x Pioneer DJM-900 NXS2

1x Shure SM-58S

1x AT ATH-M50x

Wireless Microphones (4 channels)

1x Shure ULXD4Q-G50

2x Shure ULXD2/SM58-G50 o 1x Shure ULXD2/B58-G50

1x Shure ULXD1

2x Countryman E6

Miscellaneous Portable Equipment

1x Shure BETA 52A

3x Sennheiser E604

3x Sennheiser E609 SILVER

4x Shure SM57-LC

2x Radial Engineering JDI

1x Radial Engineering JDI Stereo o 4x K&M 26075

4x K&M KM210/9 Black

12x K&M KM259 Black

20x Whirlwind MK415NP

16x Whirlwind MK430NP

8x Whirlwind MK450NP

1x Clair Brothers Caddy



Stage Information

Proscenium-style Cabaret with motorized main curtain, manual upstage curtain, LED Screen, lighting grid above the stage, FOH lighting trusses, production lighting dimming system and a complete sound system.

Stage platform and catwalk

31'-0" wide X 8'-0" deep stage X 26" high with stairs on both sides and a 24' long, 4' X 8' wide catwalk

Stage platform and circular catwalk

31'-0" wide X 8'-0" deep X 26" high with stairs on both sides and a 25' long, 4' X 8' wide catwalk, finishing in a 10' diameter circle, (total depth 33'-0-3/4")

Stage platform and oval catwalk

31'-0" wide X 8'-0" deep X 26" high with stairs on both sides and a 25' long, 4' X 8' wide catwalk, finishing in a 16' X 9'-10-1/8" oval

Circle stage platform

31'-0" wide X 11'-2" deep at center line X 26" high with the possibility of stairs on both sides, or stairs stage right and 4 other platforms stage left at the same elevation of the stage. (these 4 platforms can be used the all of the other stage configurations.)

Circle stage alternate platform

31'-0" wide X 8'-8-7/8" deep at center line X 26" high with the possibility of stairs on both sides.

Circle stage platform with catwalk

31'-0" wide X 8'-8-7/8" deep at center line X 26" high with the possibility of stairs on both sides, finishing in a 10' diameter circle, (total depth 33'-0 3/4").



Curtains & Rigging

Main Curtain Full length motorized main curtain goes from ceiling to floor of the cabaret in front of the circle stage platforms (approx.15' High).

Upstage Curtain Manually operated curtain sits on top of the platforms (approx.10' High). It covers the LED Screen and the stage sides.

On stage 4' – 0" Schedule 40 pipe grid covering the whole stage upstage of the main motorized curtain. The pipe grid is equipped with power and network for theatrical lighting.

FOH 4 – 12 X 12 static black box trusses mounted on the perimeter of the cabaret. North and South trusses are approx. 39' long and the East and West trusses are approx. 28' long. These trusses are equipped with power and networking devices for the resident and guest theatrical lighting plots.



Lighting

The bar and dining areas include both architectural and theatrical lighting. The feature of the space is the Starburst, an installation with 1,952 individually controlled LED nodes using 19 universes of DMX.

This ceiling can accept color washes, but also low-resolution video and can be integrated with content on the LED wall. Other architectural includes focusable downlighting for general illumination and track fixtures to provide spots for tables. The exquisite murals are lit from below and above. Theatrical fixtures are mounted to the four 12" black box trusses surrounding the Starburst. Each of these static trusses is equipped with theatrical light fixtures and additional power and networking for both the resident light plot and guest/rental fixtures. Theatrical floor panels provide network connectivity and power for either a FOH control or staging at the center of the room.

The stage area and BOH contain architectural fixtures to light the main motorized curtain and work lights over stage. Additional hidden linear fixtures light the POS stations and the hallway

connection to the Green Room and other areas of the 7th floor. Theatrical lights are hung on a pipe grid upstage of the main curtain. As with the dining truss, power and networking is provided for both the resident light plot and guest/rental fixtures. Power and network connectivity for additional guest equipment is provided on walls on either side of the LED wall.

Rigging points are distributed in a grid throughout the space just above the ceiling to provide support for special events or operators who require a more custom experience. Each of these rigging points is adjacent to a network port for data connectivity.

Control for the space can be accomplished in multiple ways. Primary control for standard events (dining throughout day and night, corporate

speaking, etc) can be triggered as pre-recorded presets via the Crestron touchpanel or iPad. Custom or live events may be programmed or run live via a lighting console. All lighting is controlled with sACN (for theatricals and architectural) and Art-Net (for the Starburst). This allows a guest console to be brought in and used for events.

Main System Components

Lighting Fixtures

Grand Ma3 Lighting console

3x Ma3 Processing units

9 Elation DaVinci Artistes

8 Elation Fuze Washes 250Z o (10)
Elation SixPAR200s

9 Elation SixBARs



Video

The video display system at the ETS Cabaret is a state of the art 1.6mm direct view LED display that is 25 feet wide by 12 feet high.

It has a native resolution of 4560 by 1980 in a CinemaScopic 2:30: 1 aspect ratio and is driven by a powerful and flexible content processing system to enable flexible usage scenarios of the space. These scenarios include:

Cabaret/Theater shows	DJ/Nightclub
Live band performances	Movies screenings
Corporate Events	Regenerative Evergreen art
Broadcast Set background	

The various room setups can be coordinated with both the audio, the theatrical lighting as well as the starburst special effects lighting to accentuate the presentation by choreographing imagery, audio and lighting. Setups can be automated through simple setups prograded into the Crestron control panels or during live performances through the architectural and live lighting control panels. Finally, the LED display can be an integral part of the Broadcast Infrastructure that is detailed separately in this document



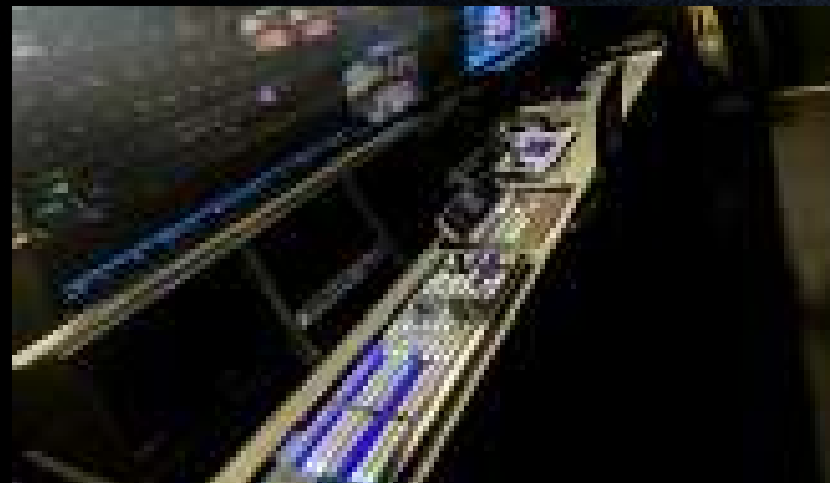
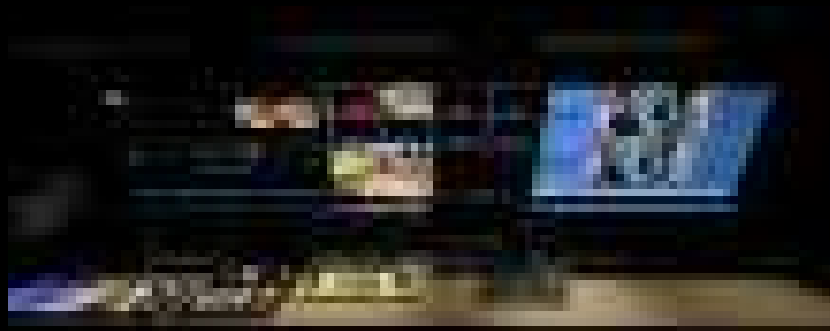
Broadcast

The ETS Cabaret is a part of the 20TS Broadcast Infrastructure that enables the usage of the venue to be one of the origination points of a production that can be broadcast to the largest LED displays in Times Square or as live video feeds to the World as well as Social Media.

The Broadcast infrastructure is vertically integrated across the complete property from the 40th floor VIP suite to the ground floor loading dock with many in between interfaces to augment the production from various locations across the hotel as well as an interface to Duffy Square to enable a complete coordinated production that incorporates Live feeds from Times Square, all the venues in the hotel and extend with dark fiber

connectivity all the way to the number one carrier hotel in NYC, 60 Hudson place.

As the infrastructure has to support the highest resolution LED displays in addition to standard Broadcast interfaces it is standard agnostic utilizing IP workflows and traditional SDI up to 12GSDI with High Dynamic Range and Wide Color Gamut cameras and processing.



Main System Components

Origination Points

Cabaret Room

Loading Dock, 10, 11, 12 and 40th floor through wall box interconnects

Duffy Square - Any signal from around the world*

Destinations

Cabaret LED Wall

Outside LED Wall

Any destination in the world*

Cameras (All signal sources can be 4K60/ HDR/WCG)

2 x Panasonic PTZ Cameras on robotic Televators

3 x Sony Handheld cameras with Tripods*

1 x Panasonic PTZ on 2 Times Square*

1 x 8K Panoramic camera*

BROADCAST Room 5th Floor

40x40 4K/60 12GSDI Router

Newtek IP series 4M/E Production switcher

BMD ATEM 4K 4M/E Break switcher

TelemetricsRoboticControl

RTS ODIN with Romeo wireless Intercom

Tektronix GM Clock and Prism Test system



Power Distribution

FOH

- 1 - 20A 120v
- 4 - network ports o Center of Dining
- 1 - 20A 120v
- 2 - network ports o Wall Panels Near Bar
- 2 - 20A 120v
- 1 - 208v
- 1 - network port

Stage Wall

- 4 - 20A 120v per side
- 2 - network ports per side
- Strong Point at Center (Middle of the Starburst)
- 1 - 20A 120v
- 1 - network port o Dining Truss
- 30 - 20A 120v distributed across truss
- 4 - 208v distributed across truss
- 10 - network ports distributed across truss

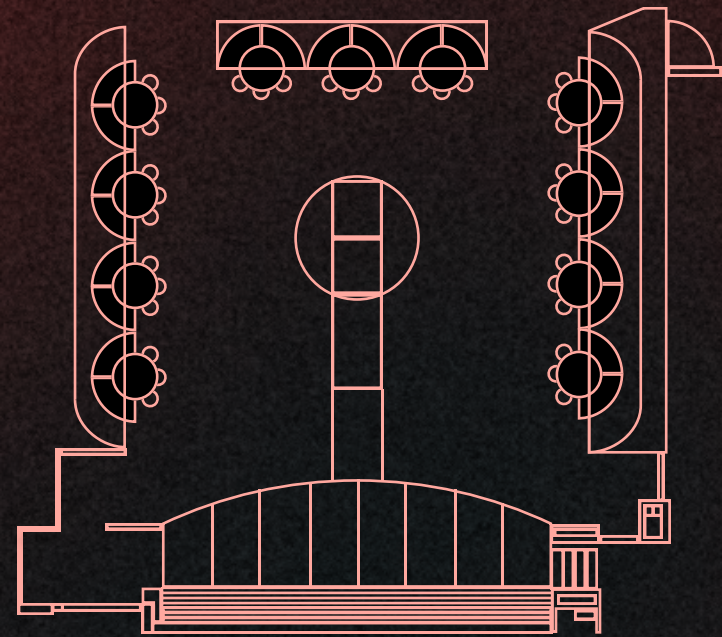
Pipe Grid

- 24 - 20A 120v across pipe grid
- 3 - 208v
- 7 - network ports across pipe grid
- 100 A Company Switch in adjacent room with pathway to stage

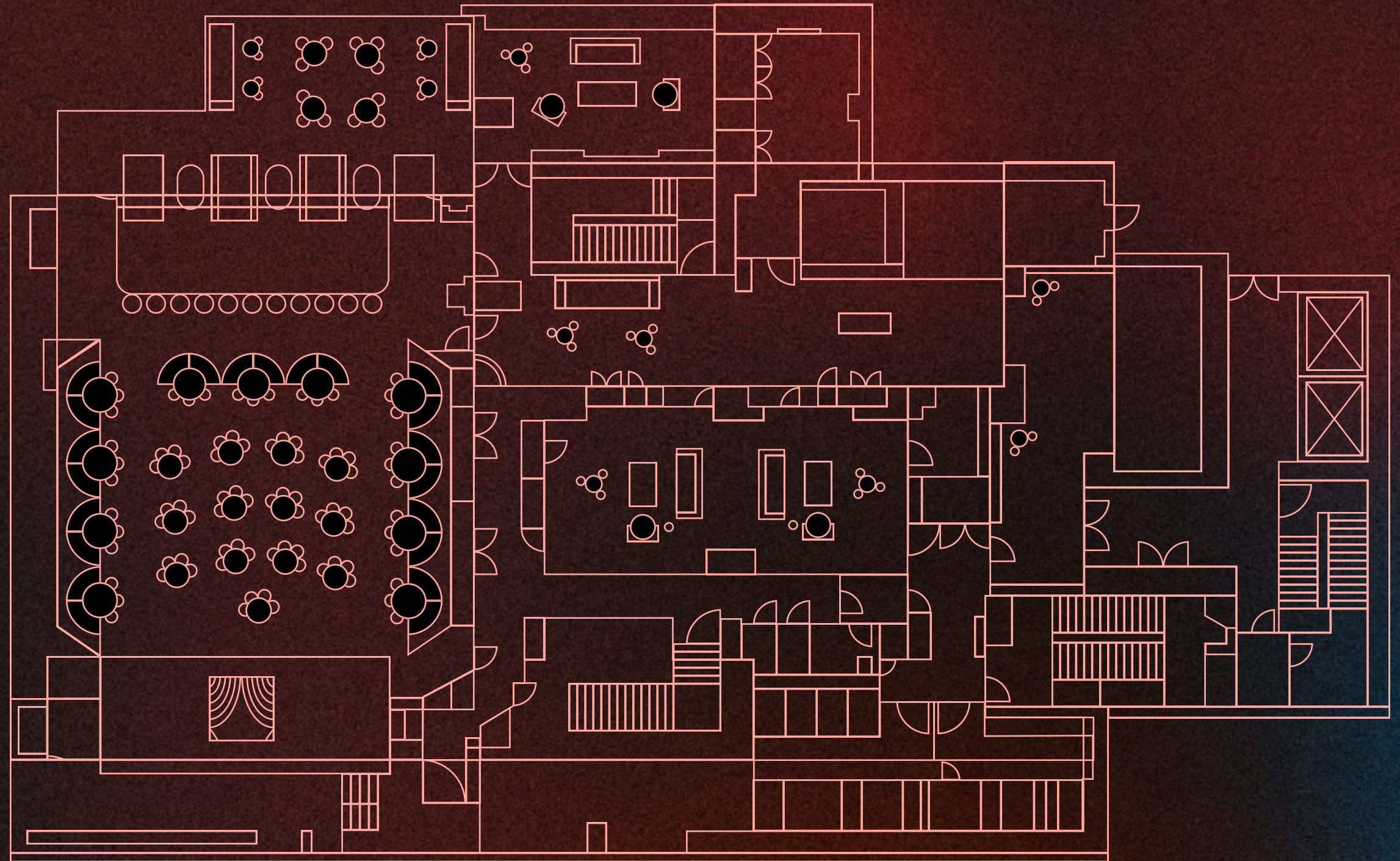
Control

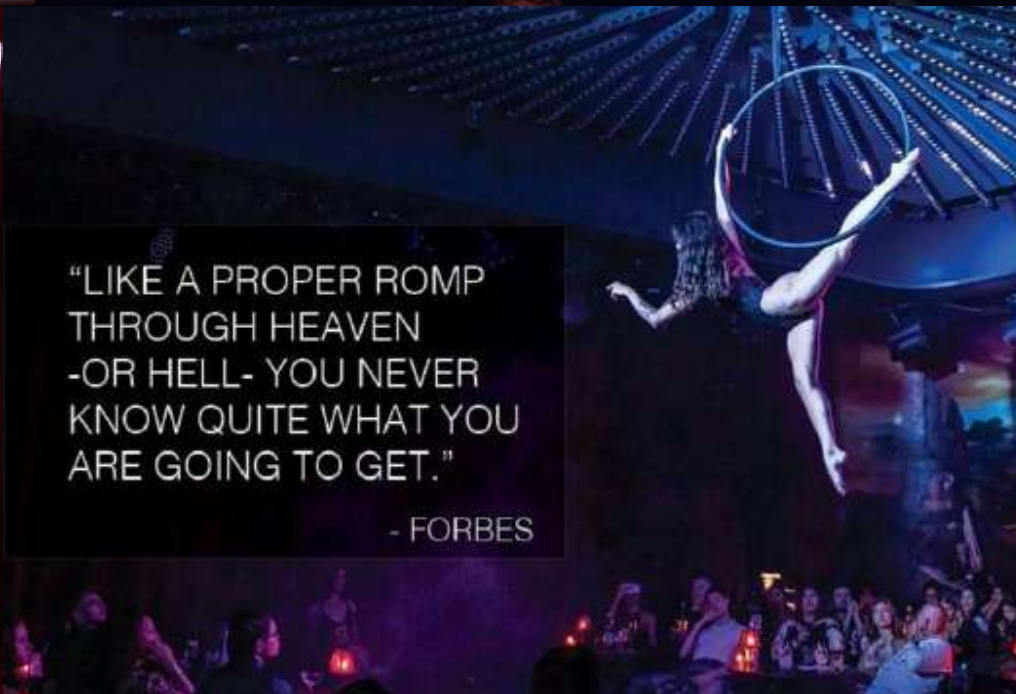
- FOH Lighting control -
- Full size GRAND MA3 Console
- 3 NPU's
- ETC Gio @ 5 48 universes
- 2 - ETC Mosaic 50 universe controllers (1 primary, 1 back up)

Venue Floorplan



Alternate stage layout





Paradise Club NYC



Jono Mason

jono@paradisecub.life

347.860.1236